

# AI offering of the member companies of Analytics plus growth network

January 2019

Leila Saari

# Aitosoft - Analytics visualisation platform

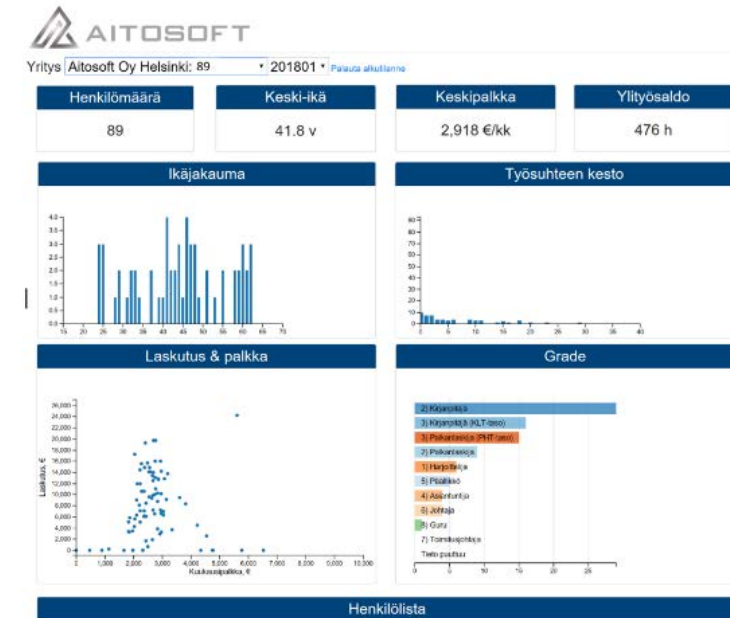
An extremely powerful Analytics platform for visualizing complex information. Easy to Use: No large report libraries, just a few clicks.

- Platform(s): Microsoft SQL server, Azure
- AI competences: Data Visualisation, Data Ingestion, Data munging
- Application domain(s): Can be used in any industry
- Public Reference: Tilipalvelu Rantalainen Oy

## Contacts:

Name: Juha Jaakkola, CEO  
E-mail: juha.jaakkola@aitosoft.com  
Phone: +358 400 592 677  
www.aitosoft.com

**Analytics<sup>+</sup>**



# Customized Machine Learning Solutions

Artific Intelligence provides customized machine learning programming and consulting to help your business discover the power of artificial intelligence.

- Platform(s): Python, R, Pandas, Scikit-learn, Keras, cloud
- AI competences: Machine learning, Data visualisation
- Application domain(s): Health, Science or technics, ICT, NLP
- References: Cell detection from microscope images, Predictive model for nodal metastasis of breast carcinoma, Hate speech detection system for Fazer marketing campaign

## Contacts:

Tuomas Tikkanen  
tuomas.tikkanen@artific.ai  
+358 451 555 075  
Helsinki  
[www.artific.ai](http://www.artific.ai)

**Analytics<sup>+</sup>**

We solve business problems with machine intelligence





**Machine learning**

We teach computers with data to:

- Predict phenomena
- Automate processes
- Detect anomalies



**Data analysis and visualization**

We extract actionable insights from your data.



**Consulting**

We help people understand what is AI and how to benefit from it.



**A R T I F I C**  
**I N T E L L I G E N C E**



# Avarea: Analytical Brains at Your Service

## Business Advantages through Analytics.

- Platform(s): Python & R ML-libraries, MS Azure, SAS Viya, AWS
- AI competences: Fundamentals, Statistics, Data visualisation, Big data, Machine learning, Data wranglin & ingestion
- Application domain(s): Customer, profitability and IoT analytics
- References: Elisa Oyj, Helsingin Seudun Ympäristöpalvelut, Kone, Oyj, Posti Oy, ThirdPresence Oy, Valio Oy, Valmet Oyj, YIT Oyj

### Contacts:

Name: Tomi Haapanen  
E-mail: [tomi.Haapanen@digia.com](mailto:tomi.Haapanen@digia.com)  
Phone: +358 44 0233306  
City: Helsinki, Finland  
<https://avarea.fi/>





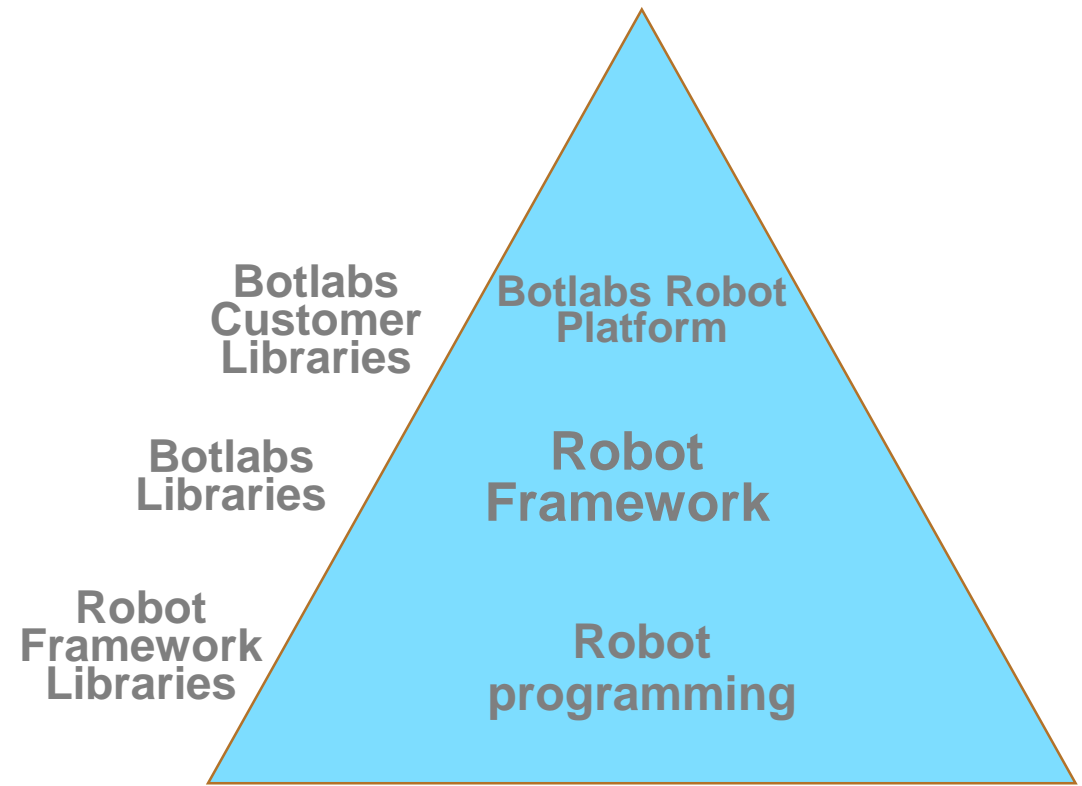
# Software Robotics will automise the manual work between various systems

Botlabs will provide low cost software robotics for all companies and for all domains. We will automate information flow between different information systems, ERP, invoicing etc which you currently do manually. Monthly fee, no other costs and no changes for the SW systems you currently use.

- Platform(s): BotlabsRobotPlatform, RobotFramework
- AI competences: RoboticProcessAutomation (RPA), Software Robots
- Application domain(s): ICT

## Contacts:

Name	Heikki Anttila
E-mail	Heikki.Anttila@botlabs.fi
Phone	+358 40 5170140
City	Oulu
www	www.botlabs.fi



# Botlabs



# Curious AI Digital Co-Worker

Our Vision is to make Digital Co-workers. Components which understand and automate knowledge tasks. Our Document Understanding product helps Enterprises in business process optimization. Our Industrial intelligence product helps process prediction, optimisation and process control.

- Platforms: Curious AI SaaS
- AI competences: Machine learning, Deep Learning
- Application domains: Industry(Production) , ICT, Enterprises, Auditing Firms
- References: Berggren & Neste Engineering Solutions-  
<https://www.neste.com/neste-engineering-solutions-and-curious-ai-develop-advanced-ai-technology-process-industry>

## Contacts:

Name - Apurva Dhawan

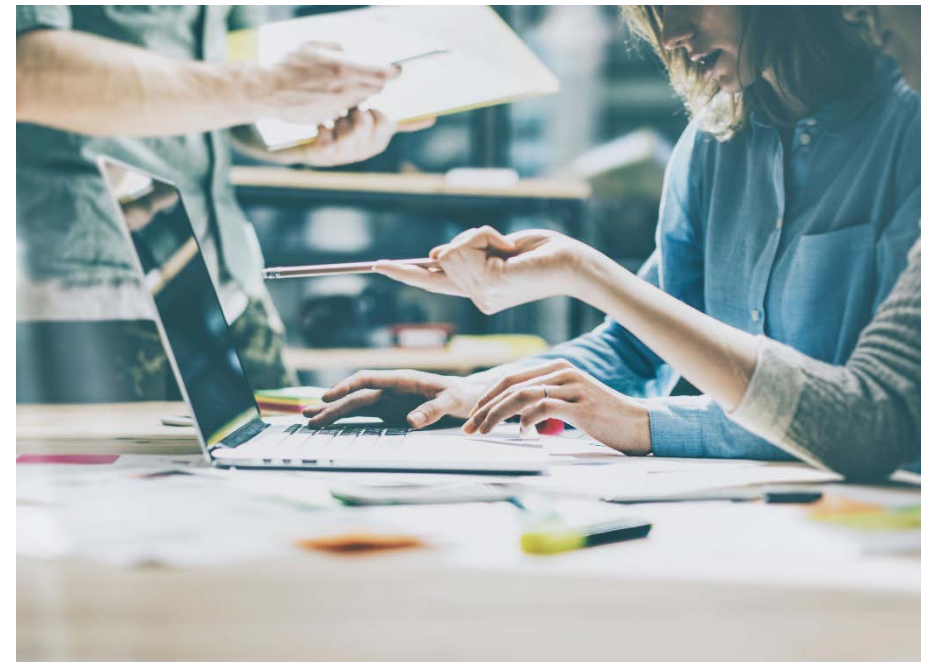
E-mail - sales@cai.fi

Phone - 0401427466

City - Helsinki

[www.thecuriousaicompany.com](http://www.thecuriousaicompany.com)

**Analytics<sup>+</sup>**



# CURIOUS AI

# Sense of your data

We are your trusted digital transformation and data analytics partner. We help you to achieve business performance improvements with hands on grip – from solution architecting to implementation and maintenance

Platform(s): Power BI, R, Azure, Python

AI competences: Data architectural design, Advanced data analytics, Statistics, Programming, Machine learning, Neural Networks, Data Visualization, Block chain technologies.

Domains: Transportation, water utilities, agriculture

References: Vainion liikenne, Pohjolan matka, Salo City IoT architecture, Sitra BDE, Salo water utilities ltd.

## Contact:

Jari Hakkarainen  
jari.hakkarainen@datasense.fi  
+358 40 5022740  
Salon  
www.datasense.fi



# Herman IT Data Center infrastructure is optimized for high performance computing and AI platforms

IBM Cloud Private for data is the building block and foundation for centralized data storing and transforming data to be ready for enhanced analytics and AI. Technology is platform agnostic and supports multi-cloud environments. Capability to provide expertise e.g. integrations to data sources, data preparation and visualization and building dashboards.

Herman IT Private Cloud enables public cloud tools and services in a private data center with transparent and forecastable pricing. Centralized cloud management covering public clouds e.g. AWS, IBM Cloud & Azure.

- Platforms: GPUs, X86, POWER9, IBM Cloud Private, IBM Cloud Private 4 Data, Containers
- AI competences: AI Platforms, Data Ingestion, Data Munging, Enhanced Analytics, Machine learning
- Application domain(s): Mining, Industry, Finance and Insurance, Machinery, Forest industry, ICT
- References: Curious AI, Valossa and several non-public references

## Contacts:

Kari Maikkola & Veli-Antti Leinonen

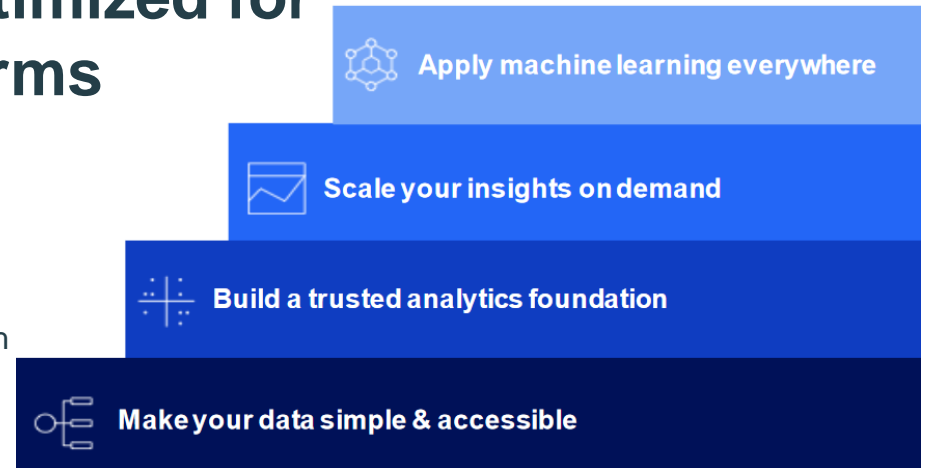
[Kari.maikkola@hermanit.fi](mailto:Kari.maikkola@hermanit.fi) +358 45 636 1884

[Veli-Antti.Leinonen@hermanit.fi](mailto:Veli-Antti.Leinonen@hermanit.fi) +358 44 740 1010

Kajaani, Oulu, Helsinki

[www.hermanit.fi](http://www.hermanit.fi)

## Analytics<sup>+</sup>



**Herman IT**  
STABLE. SECURE. IN FINLAND.



# InnoVIBE Road Information System monitors road condition and classifies vehicles

Innofreaks builds an intelligent road infrastructure based on sensors which are placed in the road structure.

- Platform(s): cloud technology
- AI competences: patterns in data, Machine learning, Algorithms, optimisation
- Application domain(s): Logistics, (road) construction, Sports, Wellbeing
- References:

## Contacts:

sales@innofreaks.fi  
gsm +358 50 436 2439  
Espoo  
www.innofreaks.fi



# Case: Real-time Video Stream Analysis

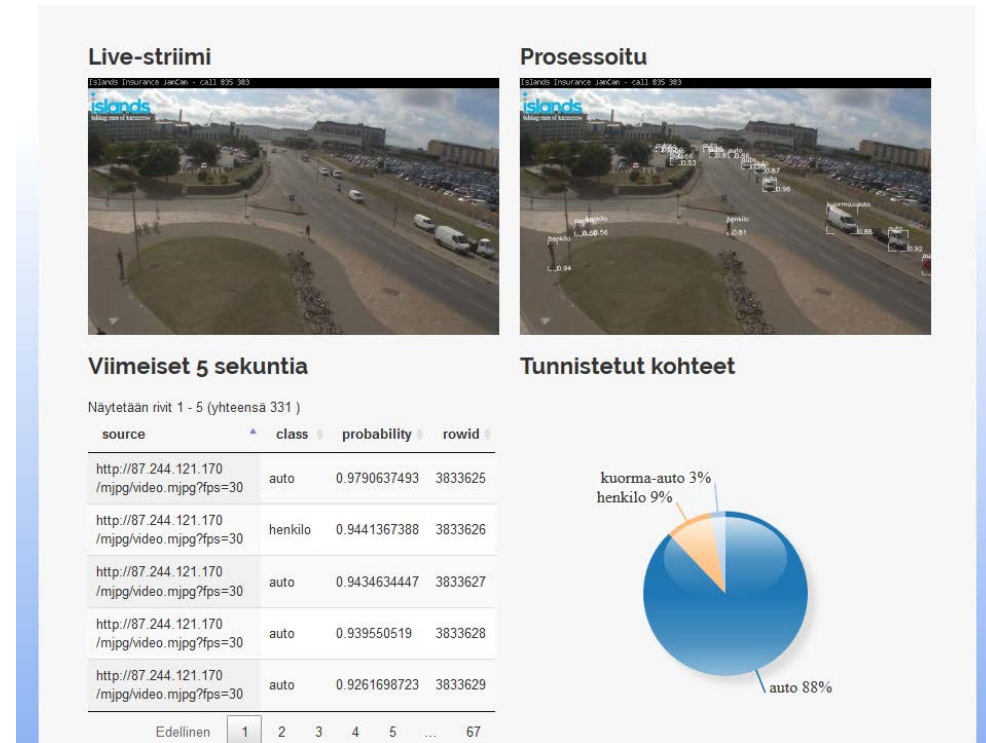
Picture and video identification and real-time process including fast forecasting

- Platform(s): Azure, Yolo, Kalman Filter, Social LSTM
- AI competences: Machine Learning, Open-source technologies
- Application domain(s): ICT, several industries
- References: <https://www.invenco.fi/video-stream-tietomassat-analysointi/>

## Contacts:

Name: Petri Räsänen  
E-mail: [petri.rasanen@invenco.fi](mailto:petri.rasanen@invenco.fi)  
Phone: +358 50 516 0525  
City: Vantaa  
[www.invenco.fi](http://www.invenco.fi)

**Analytics<sup>+</sup>**



**invenco**

# Smarten – Advanced Data Discovery tools

Just Sourcing is Nordic distributor and analytics consulting partner of Smarten Analytics Suite. We provide Smart Data Discovery tools including Augmented Analytics solution that provides sophisticated Self-Serve Tools and Guidance for the Business Users. Our easy-to-use Advanced Data Discovery Tools are suitable for all users from Business User to Data Scientist.

- Platform(s): Built on Apache Spark, runs on cloud and on-premise, R integration
- AI competences: ML, Big Data, Statistics, Data ingestion and visualisation
- Application domain(s): ICT, multiple domains
- References: Visma Public Oy

## Contacts:

Name: Timo Ruotsalainen

E-mail: [timo@justsourcing.com](mailto:timo@justsourcing.com)

Phone: +358 40 7501794

City: Espoo

Www: [www.justsourcing.fi](http://www.justsourcing.fi)

## Analytics<sup>+</sup>



# Just Sourcing

# Lingsoft Makes Language Digital – on Every Level

## De Facto Standard of Language Analysis

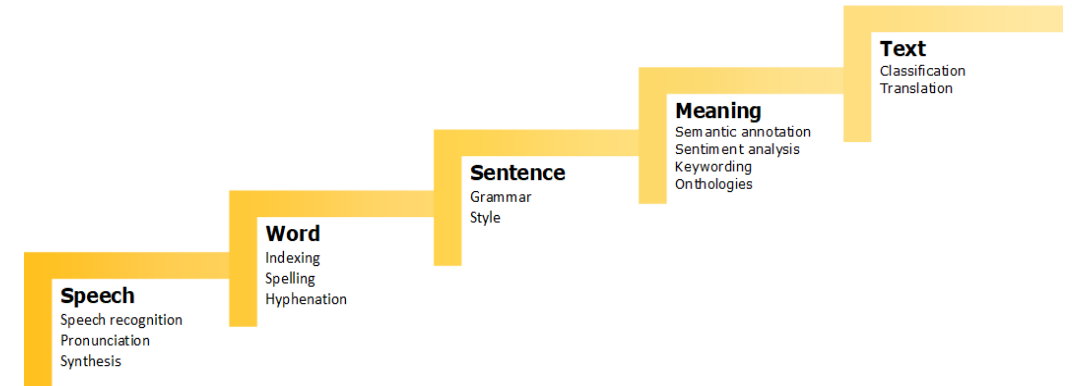
Lingsoft provides a wide range of services and solutions designed for the analysis, processing, production and management of spoken and written language. We help our customers understand, produce, find, create, use and edit linguistic information in a digital world filled with words.

Keywords: Accessibility, Discoverability, Productivity; Text Analytics, Speech Recognition, Machine Translation

- Platform(s): IBM Watson Explorer, Microsoft Office, Adobe InDesign and InCopy, Lingsoft LMC3.0 (API's available)
- AI competences: Machine learning, Text mining, NLP, Big Data
- Application domain(s): ICT, Finance and insurance, Science or technics, Management and support, Public, Education, Health, Media (and more)
- References: IBM, Microsoft, VRK/Suomi.fi, YLE, VSSH / Auria Palvelut, SYNLAB

### Contacts:

Maria Leinonen, Chief Digital Experience Officer  
E-mail: [maria.leinonen@lingsoft.fi](mailto:maria.leinonen@lingsoft.fi)  
Phone: +358 40 5465 717  
City: Turku, Finland  
[www.lingsoft.fi](http://www.lingsoft.fi)



# Lingsoft®

## LANGUAGE MANAGEMENT

**Analytics<sup>+</sup>**

# Acoustic and vibroacoustic applications and sensor solutions for IIOT customers

Melufoni® wireless stethoscope – a product example of embedded electronics, radio technology and energy efficient systems - is an excellent tool for fault detection and condition monitoring.

- Platform(s): Windows/Linux, embedded, MatLab, Python, Java, C++
- AI competences: Fundamentals, programming, machine learning, visualization and toolboxes
- Application domain(s): Science of technics, Industry
- References: e.g.

## Contacts:

Markku Salmela

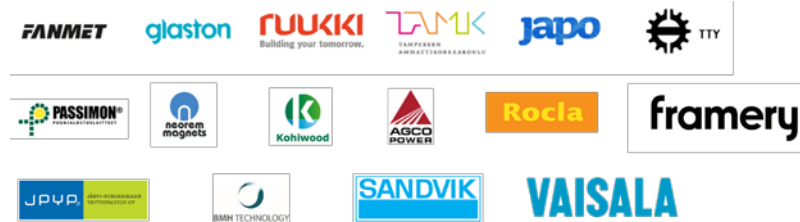
Markku.Salmela@meluta.fi

+358 50 5247438

Hermiankatu 12E, Tampere, Finland

www.meluta.fi

**Analytics<sup>+</sup>**





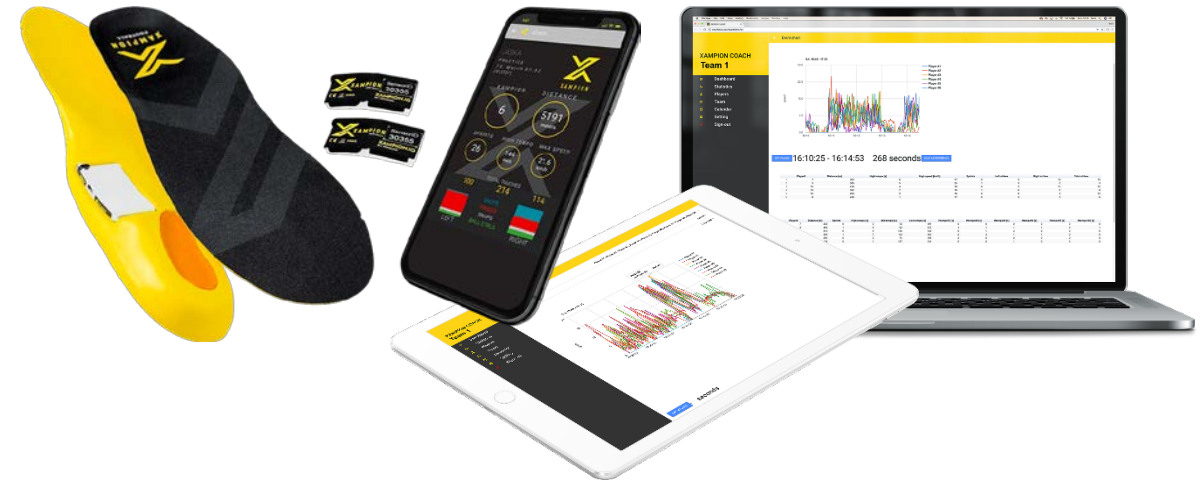
# Multi-purpose motion detection and data analytics for fact-based decision making

Progda has built a platform for modelling and analysing motion tracked by wearable sensors. The technology can be used to analyse movement in sports, health care, manufacturing and numerous other environments. The first product application built with this technology is the Xampion Football Tracking System.

- Platforms: HW, Firmware, C and MS.NET
- AI competences: Statistics, Programming, Data visualisation, Big Data, Data ingestion, data munging
- Application domains: Science or technics / Other services
- References: Xampion® Football Tracking System ([xampion.com](http://xampion.com))

## Contacts:

Name: Mr. Tero Suominen, CEO  
Email: [tero.suominen@progda.com](mailto:tero.suominen@progda.com)  
Phone: +358 50 482 0827  
City: Kaarina, Finland  
www: [progda.com](http://progda.com) / [xampion.com](http://xampion.com)



# Quva® Flow – AI enhanced process quality monitoring for keeping things in control

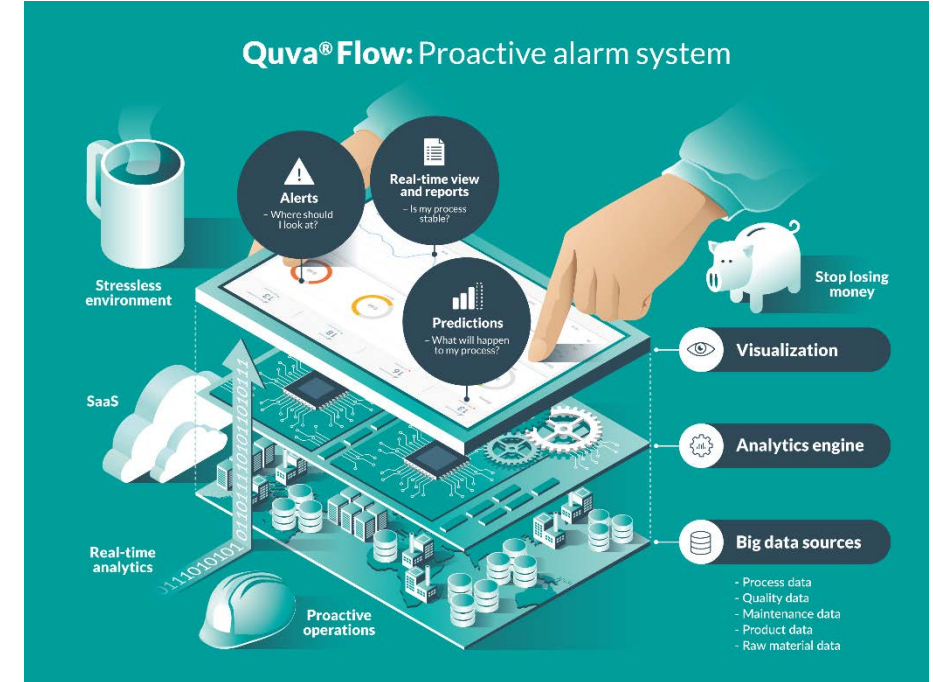
Easy-to-use automated analytics and visualizations with innovative tacit knowledge integration

- Platform(s): Open source
- AI competences: Statistics, Programming, Machine learning, Data visualisation, Big data
- Application domain(s): Industry (production)
- References: UPM, Stora Enso, Mondi, BillerudKorsnäs, SSAB, Outokumpu, Mirka, Teknos, Tikkurila, Aurubis, etc.

## Contacts:

Name	Emil Ackerman
E-mail	<a href="mailto:emil.ackerman@quva.fi">emil.ackerman@quva.fi</a>
Phone	+358 45 2086 816
City	Tampere
www	<a href="http://www.quva.fi/en">www.quva.fi/en</a>

**Analytics<sup>+</sup>**



# QUVA

**Industrial Big Data Analytics**

# Tailor-made AI solutions for your business

Leverage cutting edge technology and machine learning research by 20 PhDs for faster data processing, quick iterations, simple proof-of-concepts and easy deployment with continuous learning, with a human always in the loop.

- Platform(s): Tensorflow, Keras, PyTorch, scikit-learn, Google cloud
- AI competences: Machine Learning; Text mining, NLP; Computer Vision
- Application domain(s): Industry (Production), Finance, Energy

## Contacts:

Name: Ville Hulkko, CCO, Silo.AI

E-mail: [info@siloi.ai](mailto:info@siloi.ai)

Phone: +358 [40 7700010](tel:407700010)

City: Helsinki, Finland

www: <https://siloi.ai>

**Analytics<sup>+</sup>**



# Steamlane data analytics and cloud solutions for IoT and digitalization projects

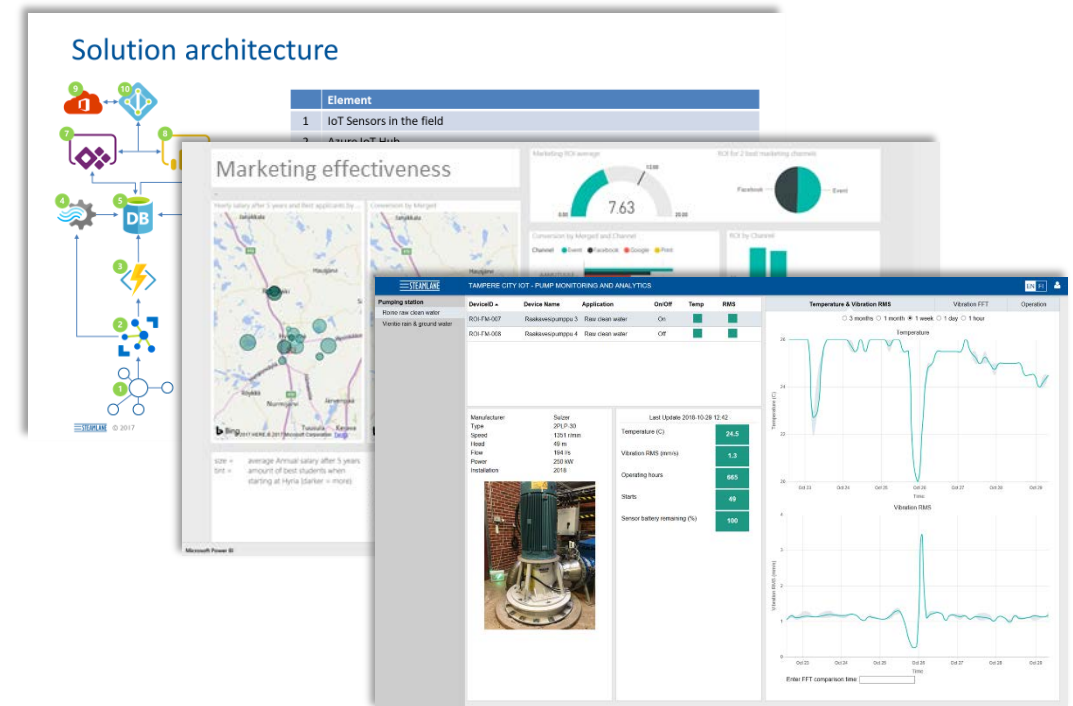
We help customers to utilize data for improving their business

- Platform(s): Microsoft Azure and open source key libraries
- AI competences: Fundamentals, Statistics, Programming, Machine learning, Text mining and NLP, Data visualisation, Big data, Data ingestion
- Application domain(s): Industry, Energy, Water and waste, Logistics, ICT, Management and support, Public, Education
- References: Several private and public sector customers

## Contacts:

Ari Karppinen  
ari.t.karppinen@steamlane.com  
+358 50 5410775  
Tampere  
www.steamlane.com

**Analytics<sup>+</sup>**



**STEAMLANE**



# Advanced analytics and computer vision solutions powered by AI.

Top Data Science is a Finnish data science company focusing on AI powered Computer Vision and Deep Learning solutions, technologies and development services. The company is working and partnering with several corporate customers in technology, healthcare and IIoT.

- Platform(s): Our solutions are based on major open-source technologies, Python.
- AI competences: Deep learning, Machine Learning, Computer Vision
- Application domain(s):
  - [Industry \(production\)](#)
  - [Health](#)
- References: Morpho Inc., GE, Stora Enso, Optofidelity, HUS Hospital, Global Biotechnology Company (Undisclosed).

## Contacts:

Timo Heikkinen, CEO & Cofounder

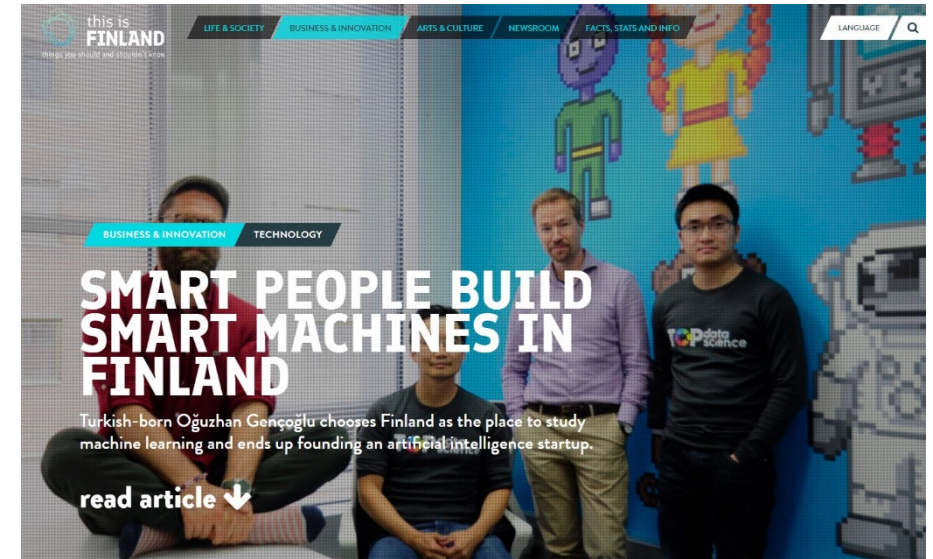
+358405894400

[timo.heikkinen@topdatascience.com](mailto:timo.heikkinen@topdatascience.com)

Top Data Science Ltd. Kuortaneenkatu 2 FI-00510 Helsinki FINLAND

<http://topdatascience.com/>

## Analytics<sup>+</sup>





# Valossa AI – the leading video recognition and content intelligence platform

Valossa AI use cases: content compliance and safety, real-time monitoring, content search and management.

- Platform(s):
- AI competences: Toolbox, pattern recognition, machine learning
- Application domain(s): ICT, arts, media
- References:

## Contacts:

Mika Rautiainen / Sami Niska  
[mika@valossa.com](mailto:mika@valossa.com) / [mika.Niska@valossa.com](mailto:mika.Niska@valossa.com)  
+358 400 122586 / +358 50 4876582  
Oulu  
[www.valossa.com](http://www.valossa.com)

**Analytics<sup>+</sup>**



# Varis includes text data sets to your analysis

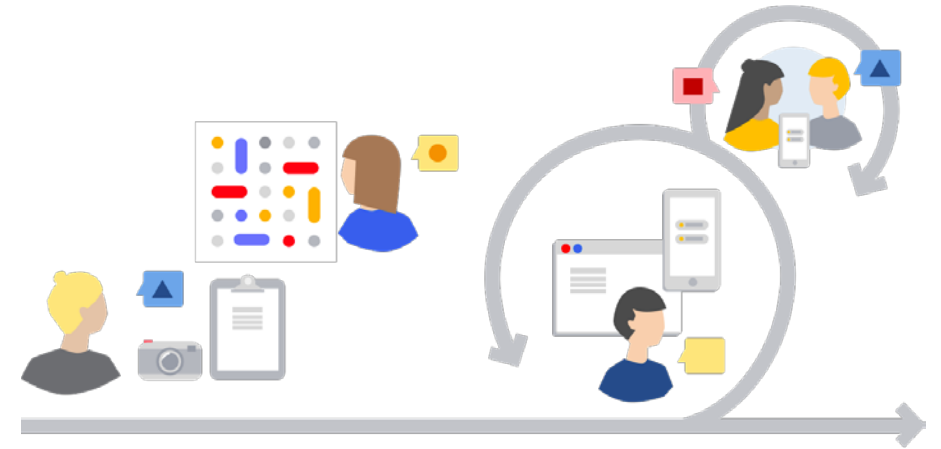
Varis acts as a mediator between the inherently heterogeneous and complex world of texts and a more rigid data model.

- Platforms: as needed, native Python API, Docker deployment
- AI competences: programming, NLP, machine learning, data ingestion
- Application domains: ICT, Industry, Energy, Finance and insurance, Sales, Science or technics, Health, other services
- References: Otavamedia, Laurea

## Contacts:

Name	Marko Laakso
E-mail	marko.laakso@valuemotive.com
Phone	+358 45 135 4248
City	Helsinki
WWW	<a href="https://varis.ai">https://varis.ai</a>

**Analytics<sup>+</sup>**



**valuemotive**

# Contact information

Leila Saari

[leila.saari@vtt.fi](mailto:leila.saari@vtt.fi)

+358 408208929

<https://www.analytics.plus/>